

# SOFT FLOOR COVERING SOLUTION

NB • RF • RM  
GC • PCT • SUS

PRODUCT DESCRIPTION	IMPACT PERFORMANCE $\Delta L_w$
Karma Acoustic Mat	18 dB

NB – Pre-Completion Testing requirements for separating floors are different in England and Wales to Scotland. Scottish Guidance Construction 5.1.8 Floor Type 1 requirement  $\Delta L_w$  17dB

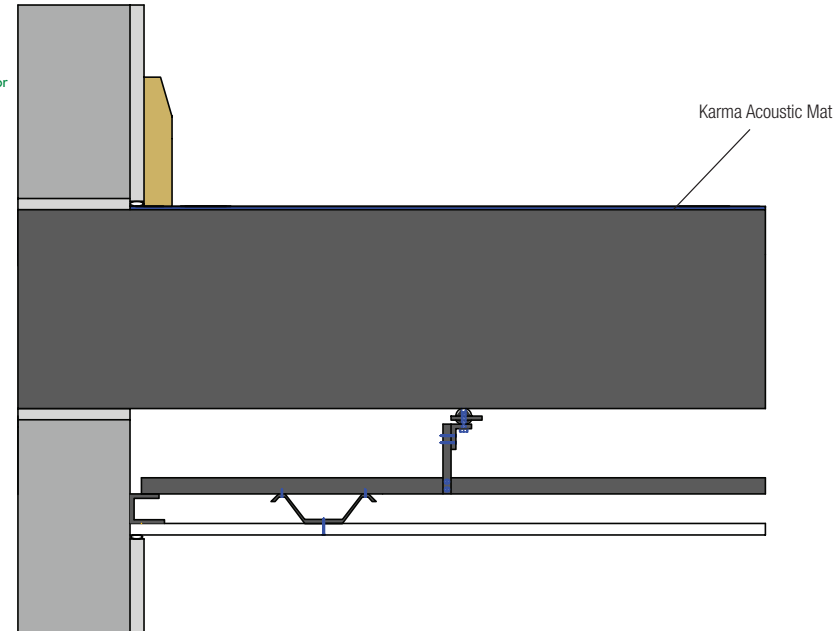
## SOFT FLOOR COVERINGS

Soft floor coverings are used to provide a quick and simple solution to insulate against impact sounds on a concrete floor.



### KARMA ACOUSTIC MAT

- Sustainable product made from 100% recycled materials
- Can be bonded to all types of concrete floors
- Can be used in conjunction with all final floor finishes including vinyl, wood, laminate, carpet, marmoleum and linoleum. If used with an appropriate tile adhesive it can also be used under ceramic tiles
- Can be used in conjunction with under floor heating systems
- Karma Acoustic Mat Adhesive should be used to ensure the acoustic integrity of the structure
- Dimensions: 4.5mm x 1000mm x 1800mm or 3mm x 1000mm x 2000mm



### Solution Ref: KF-005

#### BENEFITS

- Partitions can be built off the finished floor surface
- Accepted by the NHBC for Approved Document E compliance
- Quick and easy to install saving on time and labour costs
- Excellent performance to height ratio

#### TYPICAL APPLICATIONS

- Ideal as a remedial product if the floor has failed for impact sound transmissions (due to the small height increase)
- Ideal for use in refurbishment projects where problems with door thresholds and lifting skirting boards may exist
- New build commercial projects, offices, schools and shopping centres