

DIRECT TO JOIST SOLUTION

RF • PCT • SUS

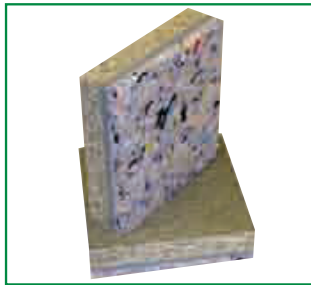
PRODUCT DESCRIPTION	IMPACT PERFORMANCE $L'_{nT,w}$	AIRBORNE PERFORMANCE
37mm Karma Acoustic TripleDeck	59 dB	51 (-2) R_w (C_{tr}) dB
30mm Karma Acoustic MultiPanel	60 dB	53 (-5) $D_{nT,w}$ (C_{tr}) dB

NB – Pre-completion testing requirements for separating floors in England and Wales are different to Scotland. See pages 4-6 of this guide.

DIRECT TO JOIST BOARDS

Direct to joist products are designed for use on refurbishment projects where existing floorboards are to be replaced and where there are problems associated with lifting the floor heights. Direct to joist products provide insulation and a finished floor surface in a single product.

This solution may comprise either the Karma Acoustic TripleDeck or Karma Acoustic MultiPanel.



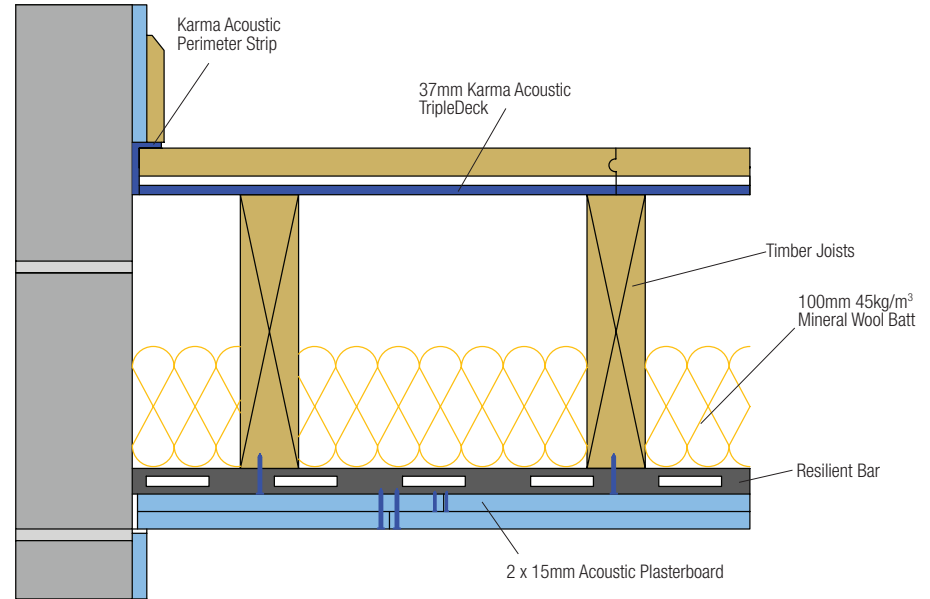
KARMA ACOUSTIC TRIPLEDECK

- Consists of a 22mm moisture resistant tongued and grooved chipboard, laminated to 15mm bi-composite foam resilient layer
- Sustainable product made up of recycled materials
- Dimensions 37mm x 600mm x 2400mm



KARMA ACOUSTIC MULTIPANEL

- Consists of a 12mm tongued and grooved cement particle board, laminated to 18mm wood fibre resilient layer
- Can be used in all areas of the build including kitchens and bathrooms
- Can be used with any floor finish
- Provides airborne and impact sound insulation in a single product
- Dimensions 30mm x 585mm x 1185mm



Solution Ref: KF-010

BENEFITS

- Non-load bearing partitions can be built off the finished floor surface
- Laid straight onto the joists, no sub-deck required
- Easy installation process, uses only one primary component to provide insulation and a finished floor surface
- Offers high performance to height ratio

TYPICAL APPLICATIONS

- Refurbishment projects where the floor boards are to be lifted
- Ideal for use when improving an existing structure where access is only available from one side
- When height restrictions exist but reliable performance is still required