

Celotex CW4000

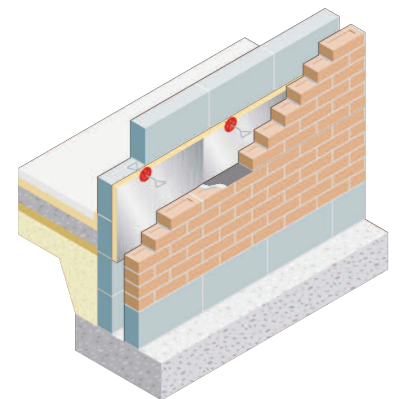
Introduction

Celotex CW4000 is an insulation board aimed specifically at partial fill cavity wall applications.

With low emissivity foil facings, CW4000 is manufactured from rigid polyisocyanurate (PIR) using a blend of blowing agents that have zero ozone depletion potential (zero ODP) and low global warming potential (GWP).

With Celotex CW4000 you are specifying an insulation board that:

- Is easy to fit between wall ties using cavity tie clips for retention
- Comes in thicknesses ranging from 25mm-100mm
- Comes in conveniently sized boards for installation between cavity wall ties
- Includes low emissivity foil facings giving improved thermal insulation performance within cavity air spaces
- Has excellent dimensional stability
- Provides reliable long term energy savings for buildings
- Is available in a standard board size of 1200mm x 450mm



Celotex CW4000 in a masonry cavity wall application

Applications

Celotex CW4000 is specifically for use in partial-fill cavity wall applications.

Specification Clause

The insulation shall be Celotex CW4000 _____mm thick comprising a polyisocyanurate rigid foam insulation core, with a thermal conductivity of 0.022 W/mK and low emissivity aluminium foil facings on both sides. CW4000 is A+ rated when compared to the BRE Green Guide 2008 and CFC/HCFC free with zero ODP and low GWP. CE marking compliance to BS EN 13165:2001 and manufactured in accordance with quality management systems with BS EN ISO 9001:2000 by Celotex Limited. All products must be installed in accordance with instructions issued by Celotex Limited.

Celotex CW4000 Technical Data

| Product Code | Thickness (mm) | R-value (m ² K/W) | Weight (kg/m ²) |
|--------------|----------------|------------------------------|-----------------------------|
| CW4025 | 25 | 1.10 | 0.85 |
| CW4040 | 40 | 1.80 | 1.26 |
| CW4045 | 45 | 2.00 | 1.40 |
| CW4050 | 50 | 2.25 | 1.55 |
| CW4060 | 60 | 2.70 | 1.88 |
| CW4065 | 65 | 2.95 | 2.03 |
| CW4070 | 70 | 3.15 | 2.17 |
| CW4075 | 75 | 3.40 | 2.32 |
| CW4080 | 80 | 3.60 | 2.46 |
| CW4090 | 90 | 4.05 | 2.74 |
| CW4100 | 100 | 4.50 | 3.28 |

Sustainable Insulation

Celotex PIR insulation has been independently assessed by BRE Global and has been accredited with an A+ rating when compared to the BRE Green Guide 2008.

The results also show that Celotex offers a lower environmental impact than other typical PIR manufacturers.

For further information about Celotex' sustainable insulation solutions, visit the sustainability pages of the website at celotex.co.uk



Cont...

Physical Properties

| | Method | CW4000 |
|--------------------------------|-----------------------|----------------------------|
| Compressive strength | BS EN 826 | ≥120kPa |
| Dimensional stability | BS EN 1604 | DS(TH)8 |
| Water vapour resistance | BS EN 12086: Method B | >150 MNs/g |
| Thermal conductivity | BS EN 12667 | 0.022 W/mK |
| Surface spread of flame | BS 476-7 | Class 1 (25mm - 90mm only) |

Typical U-values

U-values will vary depending on application. To calculate a specific U-value, please refer to our online U-value calculator at celotex.co.uk

Installation Guidelines

For full details of the installation of Celotex CW4000, please refer to the 'application' pages of the website at celotex.co.uk and select the Masonry Cavity Walls application datasheet.

Further information

If you wish to contact Celotex, please visit celotex.co.uk and click on the 'contact us' page.

For information regarding storage and handling of Celotex products, or for Health & Safety advice, please refer to the 'literature' pages of the website at celotex.co.uk

Celotex has a policy of continuous product development and reserves the right to alter product designs or specifications without prior notice.

*Calls to the Celotex Technical Centre are charged at 30p per minute from a BT landline and lines are open Monday - Friday from 8.00am - 5.15pm. Details and pricing are correct at date of publication - June 2010.

Celotex Limited
Lady Lane Industrial Estate,
Hadleigh, Ipswich
Suffolk IP7 6BA

T: 0901 996 0100*
W: celotex.co.uk

Registered Office:
Lady Lane Industrial Estate
Hadleigh, Ipswich, Suffolk IP7 6BA
Registered in England No 2183896