

PRODUCT DESCRIPTION	IMPACT PERFORMANCE $L'_{nw}$	AIRBORNE PERFORMANCE $R_w (C_{tr})$
12mm Karma Acoustic JoistHood	55 dB	63 (-12) dB

NB – Pre-completion testing requirements for separating floors in England and Wales are different to Scotland. See pages 4-6 of this guide.

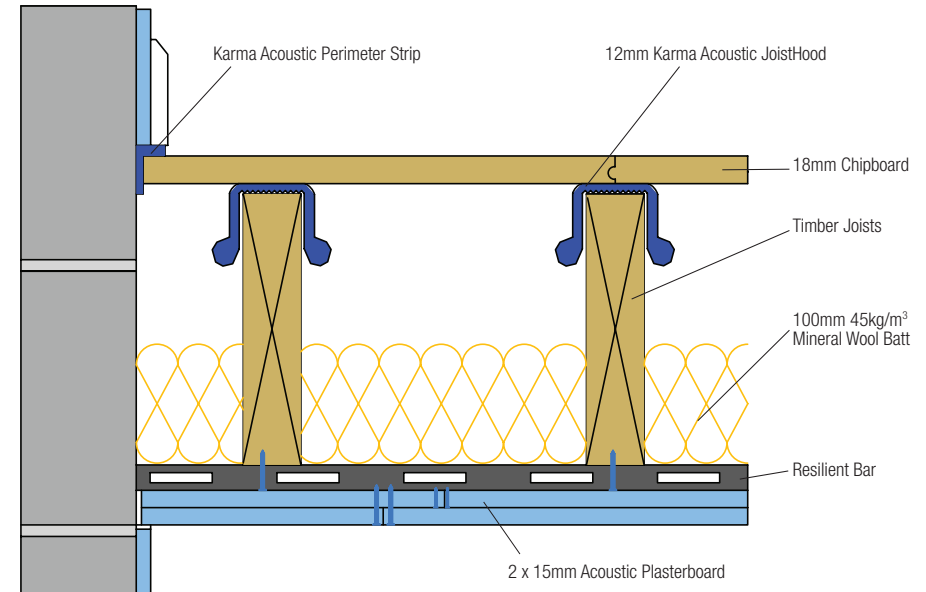
## KARMA ACOUSTIC JOISTHOOD

Karma Acoustic JoistHood is suitable for use in the refurbishment of timber joist floors within masonry constructions and also useful in 'Room in a Roof' applications.



### KARMA ACOUSTIC JOISTHOOD

- Consists of a 12mm profiled low-density polyethylene foam with gas impregnated acoustic additives
- Specifically designed to friction fit onto the joists
- Dimensions 12mm x 50mm x 2000mm



### Solution Ref: KF-011

#### BENEFITS

- Laid straight onto the joists, no sub-deck required, which reduces floor height and saves on labour costs
- Very lightweight and easy to handle with a simple installation process
- Offers a minimal height increase making it easy to marry up to existing stairs on refurbishment projects

#### TYPICAL APPLICATIONS

- Ideal on masonry timber joist refurbishment projects, if floor height is an issue or when existing floorboards are to be replaced
- 'Room in a Roof' applications to block airborne and impact sound